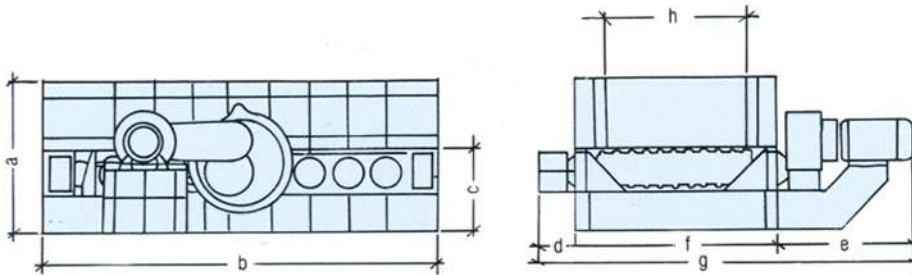
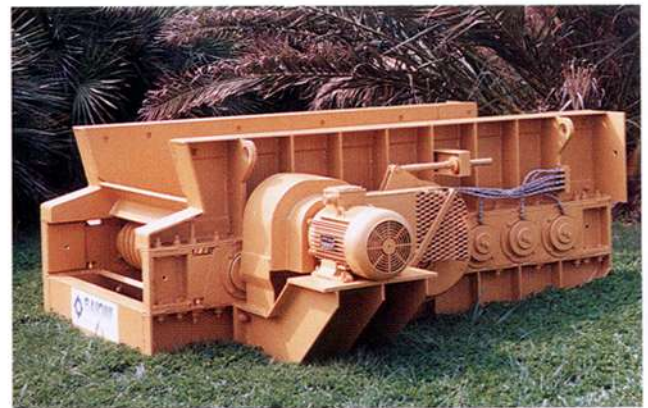
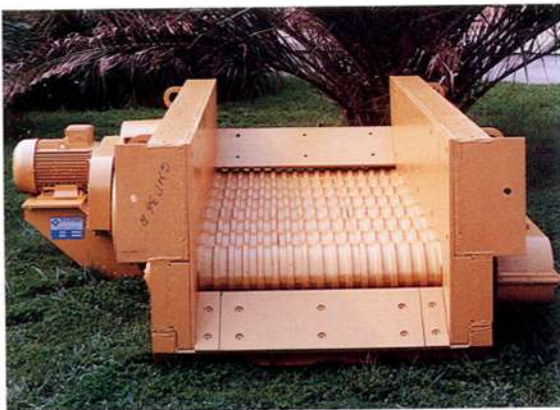


Modello Modèle Type Typ	a	b	c	d	c	f	g	h
GD 90/8	850	2330	450	200	780	1150	2130	860
GD 110/8	980	2720	580	240	870	1420	2530	1100
GD 110/10	"	3330	"	"	"	"	"	"
GD 130/8	1040	2720	640	240	870	1610	2720	1270
GD 130/10	"	3310	"	"	"	"	"	"
GD 150/8	1120	3610	700	300	1000	1810	3110	1450
GD 150/10	"	4220	"	"	"	"	"	"
GD 165/10	1020	4220	600	240	1060	2040	3340	1620
GD 200/10	1200	4220	900	280	940	2390	3610	1970



**DIMENSIONI (mm.)**  
**DIMENSIONS (mm.)**  
**DIMENSIONS (mm.)**  
**ABMESSUNGEN (mm.)**



### CARATTERISTICHE TECNICHE CARACTERISTIQUES TECHNIQUES TECHNICAL DATA TECHNISCHE DATEN

Modello Modèle Type Typ	Larghezza bocca Dimensions bouche Mouth dimensions Maubreite mm.	Luce passaggio materiale Ouverture passage matériaux Material passage opening Durchlauföffnung des Materials mm.	Portata massima Capacité max Max capacity Max. Durchsatzleistung T/h	Potenza massima Puissance installée Installed power Installierte Antriebsleistung Kw.	Peso macchina Poids machine Machine weight Gewicht der Maschine Kg.
GD 90/8	860	20x26 30x33 47x60	240	7,5	3900
GD 110/8	1100	28x20 50x50 38x37	360	11	6200
GD 110/10	"	"	"	15	7600
GD 130/8	1270	28x20 50x50 38x37	530	15	7750
GD 130/10	"	"	"	18,5	9500
GD 150/8	1450	35x25 40x78 35x35	720	22	13600
GD 150/10	"	"	"	22	17000
GD 165/10	1620	35x25 40x78 35x35	830	30	17700
GD 200/10	1970	35x25 40x78 35x35	1200	45	19900